



Shape GP

FEATURES

- Ergonomically contoured
- High-density base foam
- Four-way stretch cover overlaps back pan
- Streamlined, two-point mounting hardware
- Quick-release locking hardware
- Accommodates an array of accessories

SPECIFICATIONS

Code: E2611/E2612 (General Use)

Weight Capacity: 300 lbs.

Widths: 14", 16", 18", 20" and 22"

Height: 19"

BENEFITS

- Helps promote good posture
- Offers conforming comfort without allowing bottom out
- Prevents back cushion from shifting
- Allows for fast installation and easy depth and angle adjustment
- Allows the client to maintain an independent, active lifestyle
- Able to meet the needs of a wide range of clients

ADJUSTABILITY

Angle adjustment of 10° to -10°

2" of width adjustment

2" of depth adjustment

Height adjustable



Shape

FEATURES

- Ergonomically contoured
- High-density base foam with a soft viscoelastic upper layer
- Four-way stretch cover overlaps back pan
- Streamlined, two-point mounting hardware
- Quick-release levers
- Four-point, bolt-on hardware for use with TRU-Balance® Power Positioning or Synergy® Seat Frame Systems (2-point only with low back height)
- Available in standard and low back heights
- Accommodates an array of accessories

SPECIFICATIONS

Code: E2613/E2614 (Positioning Wheelchair Back, Posterior)

Weight Capacity: 300 lbs.

Widths: 14", 16", 18", 20" and 22"

Height: 16", 19" and 23"

BENEFITS

- Helps promote good posture
- Offers conforming comfort without allowing bottom out
- Prevents back cushion from shifting
- Allows for fast installation and easy depth and angle adjustment
- Allows the client to maintain an independent, active lifestyle
- Provides easy, solid attachment to back canes
- Provides support for a wide range of body types
- Able to meet the needs of a wide range of clients

ADJUSTABILITY

Angle adjustment of 10° to -10°

2" of width adjustment

2" of depth adjustment

Height adjustable



Shape Deep Contour

FEATURES

- Ergonomically contoured
- High-density base foam with a soft viscoelastic upper layer
- Four-way stretch cover overlaps back pan
- Fully adjustable, 7" (height) x 6" (depth), gel-covered thoracic lateral supports
- Streamlined, two-point mounting hardware
- Quick-release levers
- Four-point, bolt-on hardware for use with TRU-Balance® Power Positioning or Synergy® Seat Frame Systems
- Available in standard and tall back heights
- Accommodates an array of accessories

SPECIFICATIONS

Code: E2620/E2621 (Positioning Back, Planar with Lateral Supports)

Weight Capacity: 300 lbs.

Widths: 14", 16", 18", 20" and 22"

Height: 15"(only on 14" width), 19" and 23"

BENEFITS

- Helps promote good posture
- Offers conforming comfort without allowing bottom out
- Prevents back cushion from shifting
- Provides exceptional lateral support and comfort
- Allows for fast installation and easy depth and angle adjustment
- Allows the client to maintain an independent, active lifestyle
- Provides easy, solid attachment to back canes
- Provides support for a wide range of body types

ADJUSTABILITY

Angle adjustment of 57° to -33°

2" of width adjustment

2" of depth adjustment

Height adjustable



SYNERGY
cushions and backs

economically sound

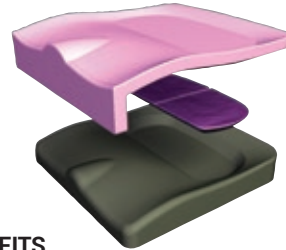
patient first

SYNERGY

cushions and backs

Synergy® Cushions and Backs from Quantum Rehab® offer an excellent selection of pressure management and positioning solutions available in a range of sizes that accommodate pediatric to bariatric patients. Each Synergy cushion uses unique components to deliver specialized pressure management and maximize comfort.

Solution®



FEATURES

- Lateral and pre-ischial shelf contoured into high-density molded foam base
- Twin-cell, aqueous gel insert under at-risk bony areas
- Moisture wicking four-way stretch cover
- Inner liner for incontinence and to reduce shear
- Viscoelastic total top layer

BENEFITS

- Provides lateral and anti-thrust support for clients in need of moderate positioning
- Designed for clients who need mild to moderate skin protection
- Reduces shear and moisture build-up
- Promotes better circulation

AVAILABLE IN PEDIATRIC SIZES

SPECIFICATIONS

Code: E2607/E2608
(Skin Protection & Positioning)

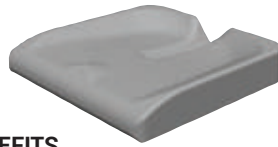
Weight Capacity: 350 lbs.

Sizes*: Pediatric: 10"x10" – 14"x14"
Standard: 14"x16" – 24"x24"

Overall Height: 3.5"



Simplicity®

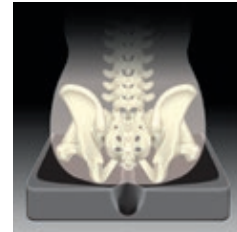


FEATURES

- Deep contoured, high-density molded foam base
- Coccyx and sacral relief
- Moisture wicking four-way stretch incontinence cover

BENEFITS

- Provides lateral support for clients in need of mild positioning
- Designed for clients who have mild skin protection needs
- Reduces moisture build-up



SPECIFICATIONS

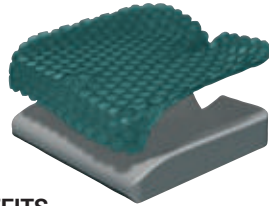
Code: E2601/E2602 (General Use)

Weight Capacity: 350 lbs.

Sizes*: 16"x16" – 24"x24"

Overall Height: 2"

Solution® 1

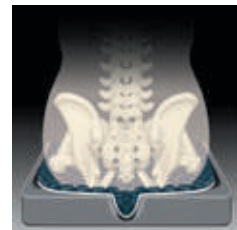


FEATURES

- Deep contoured, high-density molded foam base
- Coccyx and sacral relief
- Silicone soft gel top layer with airflow design
- Moisture wicking four-way stretch incontinence cover

BENEFITS

- Provides lateral support for clients in need of moderate positioning
- Designed for clients who need mild to moderate skin protection
- Reduces shear, moisture build-up and heat build-up
- Promotes better circulation



SPECIFICATIONS

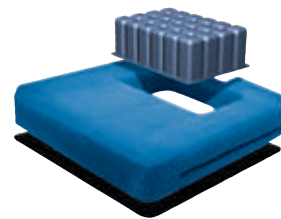
Code: E2603/E2604 (Skin Protection)

Weight Capacity: 350 lbs.

Sizes*: 14"x14" – 24"x24"

Overall Height: 2.5"

Spectrum® Air



FEATURES

- Multi-cell air bladder
- Unique airflow properties of the Sil-Air silicone foam base help keep skin cool and dry
- Pre-ischial shelf contoured into Sil-Air silicone foam base
- Waterproof, antibacterial Sil-Air base
- Precision air volume adjustment
- Compact hand pump fits in integrated carrying pouch
- Solid seat insert included

BENEFITS

- Provides excellent stability and support
- Designed for clients who need moderate to high skin protection
- Provides anti-thrust support for clients in need of mild to moderate positioning
- Greatly reduces bacteria and odor
- Prevents bottom out or high pressure from overinflation
- Convenient on-the-go air pressure adjustment



SPECIFICATIONS

Code: E2622/E2623
(Adjustable Skin Protection)

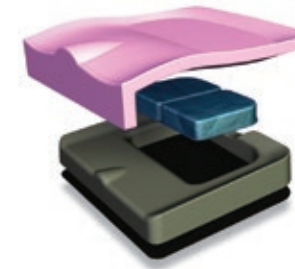
Weight Capacity: 350 lbs.

Sizes*: 14"x12" – 24"x24"

Overall Height: 3.5"

The Most Complete Selection of Solutions for the Broadest Range of Needs

Spectrum® Gel



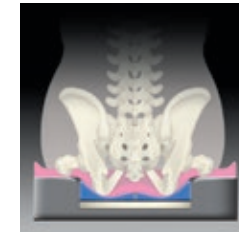
FEATURES

- Lateral and pre-ischial shelf contoured into high-density molded foam base
- Twin-cell, lightweight fluid insert under at-risk bony areas
- Moisture wicking four-way stretch cover
- Inner liner for incontinence and to reduce shear
- Viscoelastic total top layer
- Solid seat insert included

BENEFITS

- Provides lateral and anti-thrust support for clients in need of moderate positioning
- Provides excellent stability
- Designed for clients who need moderate to high skin protection
- Reduces shear and moisture build-up
- Promotes better circulation

AVAILABLE IN PEDIATRIC SIZES



SPECIFICATIONS

Code: E2605/E2606 (Positioning)

Weight Capacity: 350 lbs.

Sizes*: Pediatric: 12"x10" – 14"x14"
Standard: 14"x16" – 24"x24"

Overall Height: 3"

Spectrum® Foam



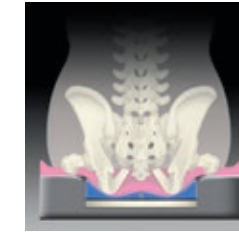
FEATURES

- Lateral and pre-ischial shelf contoured into high-density molded foam base
- Multi-layer, viscoelastic foam insert under at-risk bony areas
- Moisture wicking four-way stretch cover
- Inner liner for incontinence and to reduce shear
- Viscoelastic total top layer
- Solid seat insert included

BENEFITS

- Provides lateral and anti-thrust support for clients in need of moderate positioning
- Provides excellent stability
- Designed for clients who need moderate to high skin protection
- Reduces shear and moisture build-up
- Promotes better circulation

AVAILABLE IN PEDIATRIC AND BARIATRIC SIZES



SPECIFICATIONS

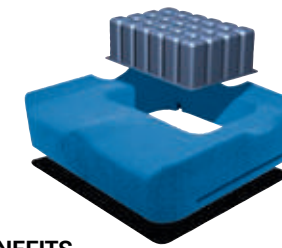
Code: E2607/E2608
(Skin Protection & Positioning)

Weight Capacity: 650 lbs.

Sizes*: Pediatric: 10"x10" – 14"x14"
Standard: 14"x16" – 24"x24"
Bariatric: 26"x18" – 32"x28"

Overall Height: 3"

Spectrum® Air [Contour]



FEATURES

- Multi-cell air bladder
- Unique airflow properties of the Sil-Air silicone foam base help keep skin cool and dry
- Lateral and pre-ischial shelf contoured into Sil-Air silicone foam base
- Waterproof, antibacterial Sil-Air base
- Precision air volume adjustment
- Compact hand pump fits in integrated carrying pouch
- Solid seat insert included

BENEFITS

- Provides excellent stability and support
- Designed for clients who need moderate to high skin protection
- Provides lateral and anti-thrust support for clients in need of moderate positioning
- Greatly reduces bacteria and odor
- Prevents bottom out or high pressure from overinflation
- Convenient on-the-go air pressure adjustment



SPECIFICATIONS

Code: E2624/E2625
(Adjustable Skin Protection & Positioning)

Weight Capacity: 350 lbs.

Sizes*: 14"x12" – 24"x24"

Overall Height: 3.5"