



More control. Fewer errors.
Better outcomes.

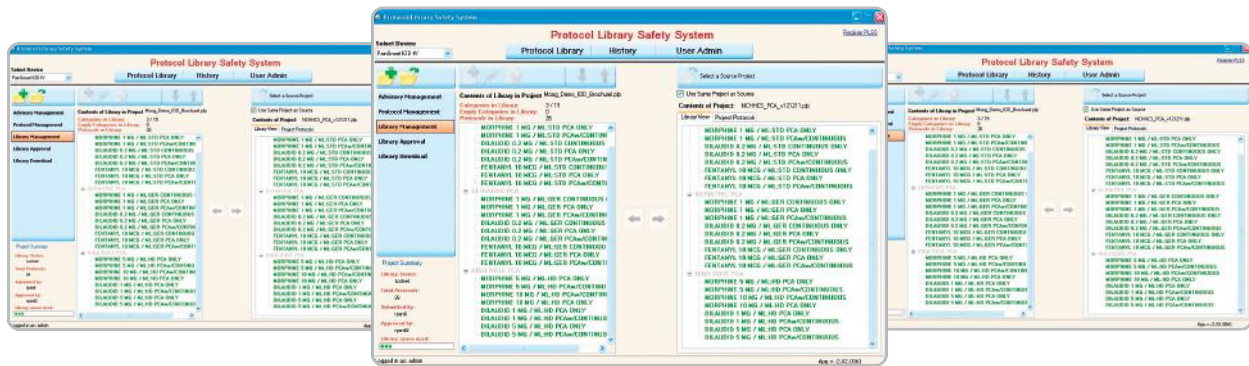
COMPATIBILITY REQUIREMENTS:

Windows 7 Windows 8 Windows 10
The Protocol Library Safety System runs
on all Windows 7, 8, and 10 PCs.

v2.04

The Protocol Library Safety System
requires a library enabled CURLIN
6000 Pump or PainSmart Pump with
v2.04 software or higher installed.

The Protocol Library Safety System (PLSS) offers an additional level of safety, control, and compliance for your infusion program when used with CURLIN 6000 and PainSmart Ambulatory Infusion Pumps.



Added Safety

- Reduce programming time and opportunity for user error with over 100 total drug protocols* that can be administered at point of care.
- Medication name is displayed on screen when using library protocols (including Tallman lettering).
- Easily add Clinical Advisories to any protocol.
- Hard and soft limits allow clinicians to more safely administer critical drug therapies.

Ease-of-Use

NURSING

- Simple and intuitive user interface is based upon proven CURLIN menu-driven screens.
- Protocol identification is easier for the clinician with categories and drug names viewable on the pump, including the use of Tallman lettering.
- Unapproved libraries are clearly labeled "NOT FOR HUMAN USE" (on the pump).

PHARMACY

- Easily edit and manage protocols through the library management interface, with large graphics and icons for simple navigation and intuitive content management.
- Existing protocols can be "dragged and dropped" into new library.
- Administrators control and secure the customization of all protocols.

* Depending on complexity of protocols