

Kneepad cushion



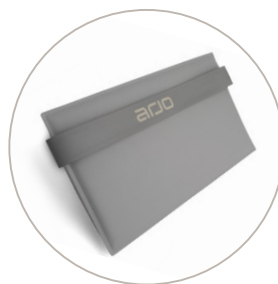
Sara Stedy



Sara Stedy Compact

The Sara® Stedy kneepad cushion provides additional comfort for patients and residents who may be sensitive in the knee area. The cushion is able to be used on both the Sara Stedy and the Sara Stedy Compact.

This cushion improves the positioning for smaller patients/residents who might need more padding to reach the right height. The Sara Stedy kneepad cushion has the same cleaning and disinfecting instructions as the Sara Stedy itself.



HMX1991

