

Hollister



913043



www.hollister.com/symbolglossary



Hollister®

©2021 Hollister Incorporated
913043-121

(en) UROSTOMY DRAIN TUBE ADAPTER

Contents

Urostomy drain tube adapter

Product Description

Urostomy drain tube adapter to connect a Hollister urostomy pouch to a night drainage bag or leg bag (not included). Product is made of polymer/copolymer plastics.

Indications and Intended Use

This product is an accessory to an ostomy pouching system that connects a Hollister urostomy pouch to a night drainage bag or leg bag.

Precautions

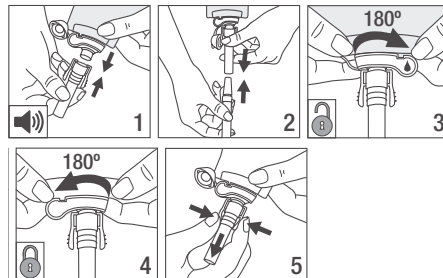


Single patient - multiple use. Sharing the product with multiple users creates risk of infection. Rinse with clean water and leave to dry. Discard when visibly damaged.

Notes

Excess mucus from a urostomy stoma may cause the pouch to drain slower than expected. Contact a stoma care nurse or healthcare practitioner for help with the ostomy pouching system or skin irritation. In case of serious injury (incident) in relation to your use of the product, please contact your local distributor or manufacturer and your local competent authority. For more information, see www.hollister.com/authority or contact EC Rep or local distributor.

INSTRUCTIONS FOR USE



To dispose: Please follow all local disposal regulations.