





Company:	<input type="text"/>			Ship To:	<input type="text"/>		
Account Number:	<input type="text"/>	Date:	<input type="text"/>	Address:	<input type="text"/>		
<input type="checkbox"/> Quote:	<input type="checkbox"/> PO Number:	<input type="text"/>			City:	<input type="text"/>	State: <input type="text"/>
ATP:	<input type="text"/>			Zip:	<input type="text"/>	Phone:	<input type="text"/>
Marked For:	<input type="text"/>			Email/Fax:	<input type="text"/>		
Associated Quote/Order#:	<input type="text"/>			Effective: 1/5/2026			

## Caribou

mm (inch)	kg (lb)				
					
Overall width		510 mm (20")	570 mm (22½")	650 mm (25½")	750 mm (29½")
Length		750 mm (29½")	920 mm (36¼")	1110 mm (43¾")	1110 mm (43¾")
Overall height, vertical		460–570 mm (18–22½")	530–640 mm (20¾–25¼")	680–790 mm (26¾–31")	880–990 mm (34¾–39")
Overall height, horizontal		700 mm (27½")	700 mm (27½")	800 mm (31½")	800 mm (31½")
Angling		0°–87°	0°–87°	0°–87°	0°–87°
Foot plate angle		(-20°)–(20°)	(-20°)–(20°)	(-20°)–(20°)	(-20°)–(20°)
Total mass		20.5 kg (45.1 lb)	24 kg (52.9 lb)	30.5 kg (67.2 lb)	35 kg (77.1 lb)
Maximum rated load		62.5 kg (137.7 lb)	86 kg (189.6 lb)	112.5 kg (248 lb)	137 kg (302 lb)
Total mass, with power		22.5 kg (49.6 lb)	25.5 kg (56.2 lb)	32.5 kg (71.7 lb)	37 kg (81.6 lb)
Maximum rated load, with power		64.5 kg (142.1 lb)	87.5 kg (192.9 lb)	114.5 kg (252.4 lb)	139 kg (306.4 lb)
Maximum user mass		40 kg (88.1 lb)	60 kg (132.2 lb)	80 kg (176.3 lb)	100 kg (220.4 lb)
User height		850–1120 mm (33½–44")	980–1290 mm (38½–50¾")	1250–1560 mm (49¾–61½")	1530–1840 mm (60¾–72½")
Static stability downhill		max. 5°	max. 5°	max. 5°	max. 5°
Static stability uphill		max. 5°	max. 5°	max. 5°	max. 5°
Sideways stability sideways		max. 5°	max. 5°	max. 5°	max. 5°

HCPCS Codes provided are based on code verification by the PDAC or our interpretation of the code definitions.

Proper use of HCPCS Codes does not ensure coverage or payment. For coverage information, verify the appropriate payer's coverage policy.

**DCN1231.3 Pricing and specifications subject to change without notice.**

## Caribou Base

### Caribou Base

*Required selection*

<input type="checkbox"/> Caribou Base, Size 1 (860101-FP)	\$1486.80
<input type="checkbox"/> Caribou Base, Size 2 (860102-FP)	\$1534.05
<input type="checkbox"/> Caribou Base, Size 3 (860113-FP)	\$1709.40
<input type="checkbox"/> Caribou Base, Size 4 (860114-FP)	\$2016

### Caribou Base with Power Actuator

*Power Actuator recommended for Size 3 and 4*

<input type="checkbox"/> Caribou Base with Power Actuator, Size 3 (860103-ELFP)	\$3620.40
<input type="checkbox"/> Caribou Base with Power Actuator, Size 4 (860104-ELFP)	\$3953.25



### Caribou Mast with Torso - Lower Body Pad

*Required Selection*

<input type="checkbox"/> Lower Body Pad, Size 1 (X860101-P)	\$1276
<input type="checkbox"/> Lower Body Pad, Size 2 (X860102-P)	\$1314.50
<input type="checkbox"/> Lower Body Pad, Size 3 (X860113-P)	\$1467.40
<input type="checkbox"/> Lower Body Pad, Size 4 (X860114-P)	\$1729.20

### Multi Adjustable Footrests

*Required Selection*

<input type="checkbox"/> Multi Adjustable Footrest, Size 1 (X860101-F)	\$443.30
<input type="checkbox"/> Multi Adjustable Footrest, Size 2 (X860102-F)	\$477.40
<input type="checkbox"/> Multi Adjustable Footrest, Size 3 (X860113-F)	\$504.90
<input type="checkbox"/> Multi Adjustable Footrest, Size 4 (X860114-F)	\$533.50

## Chest Pad

*Chest Pad is a required selection*



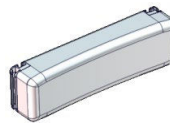
<input type="checkbox"/> Chest Pad, Size 1, A: 6", B: 7", C: 7.75" (861101-1)	\$450
<input type="checkbox"/> Chest Pad, Size 2, A: 7.5", B: 9", C: 9.75" (861101-2)	\$475
<input type="checkbox"/> Chest Pad, Size 3 A: 8.75", B: 10.5", C: 12.5" (861101-3)	\$500
<input type="checkbox"/> Chest Pad, Size 4, A: 9.75", B: 12.25", C: 15.75" (861101-4)	\$525

## Extra Cushion

*Choose the same size as the Caribou Base, then state desired quantity in the box below*

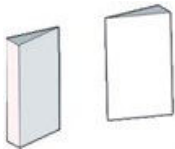
### Extra Cushion

<input type="checkbox"/> Extra Cushion, Size 1, A: 9.75", B: 12.25", C: 15.75" (861101-4) (Each)	\$295
<input type="checkbox"/> Extra Cushion, Size 2: W: 11.75" x H: 4" (Each) (861106-2)	\$295
<input type="checkbox"/> Extra Cushion, Size 3, W: 13.75" x H: 4" (Each) (861106-3)	\$325
<input type="checkbox"/> Extra Cushion, Size 4, W: 15.75" x H: 4" (Each) (861106-4)	\$325



Quantity:

## Supports and Wedges



### Wedges

<input type="checkbox"/> Wedges for Side Slots, Size 1 (Pair) (861107-1)	\$22
<input type="checkbox"/> Wedges for Side Slots, Size 2 (Pair) (861107-2)	\$22
<input type="checkbox"/> Wedges for Side Slots, Size 3 (Pair) (861107-3)	\$22



### Back Supports

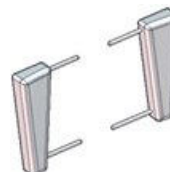
<input type="checkbox"/> Back Supports, Size 1 and 2 (Each) (861115-2)	\$350
<input type="checkbox"/> Back Supports, Size 3 and 4 (Each) (861115-3)	\$375



### Upper Arm Supports

*Can not be used with shoulder supports. Can not be used with Lateral Side Supports.*

<input type="checkbox"/> Upper Arm Support, Small (861109-10)	\$450
<input type="checkbox"/> Upper Arm Support, Large (861109-20)	\$485



### Shoulder Support

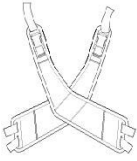
*Must match Chest Pad size*

<input type="checkbox"/> Shoulder Support, Size 1 (Pair) (861126-1)	\$300
<input type="checkbox"/> Shoulder Support, Size 2 (Pair) (861126-2)	\$315
<input type="checkbox"/> Shoulder Support, Size 3 (Pair) (861126-3)	\$330
<input type="checkbox"/> Shoulder Support, Size 4 (Pair) (861126-4)	\$350

## Vest Options

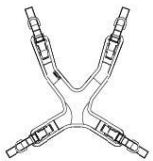
Measuring Shoulder to Pelvis Diagonally. See pictural under Belts and Straps. Vests require fixlocks for mounting.

### Cross Vest



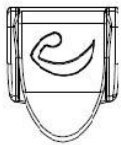
- ☐ Cross Vest, XS, S-P: 7.75" - 12.5" (Each) (85720-XS) \$220
- ☐ Cross Vest, Small, S-P: 10.75" - 12.5" (Each) (85720-S) \$220
- ☐ Cross Vest, Medium, S-P: 12.5" - 16" (Each) (85720-M) \$220
- ☐ Cross Vest, Large, S-P: 16" - 18.5" (Each) (85720-L) \$220
- ☐ Cross Vest, XL, S-P: 20.5" - 23.5" (Each) (85720-XL) \$220

### Torso Vest



- ☐ Torso Vest, XS, S-P: 7.75" - 10.75" (Each) (85705-XS) \$232
- ☐ Torso Vest, Small, S-P: 10.75" - 12.5" (Each) (85705-S) \$232
- ☐ Torso Vest, Medium, S-P: 12.5" - 16" (Each) (85705-M) \$232
- ☐ Torso Vest, Large, S-P: 16" - 18.5" (Each) (85705-L) \$232
- ☐ Torso Vest X-Large - S-P: 18.5" - 20.5" (E0960) (85705-XL) \$232
- ☐ Torso Vest, XXL, S-P: 20.5" - 23.5" (Each) (85705-XXL) \$232

## Vest Mounting Hardware



### Fix Locks

Required selection for all vests

- ☐ Fix-Locks, Black, Bag of 6 Pcs (862109-35) \$46

## Belts and Straps



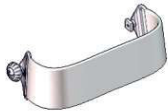
### Cross Straps



- ☐ Cross Strap, Size 1, 15" - 19.25" (Pair) (862102-1) \$305
- ☐ Cross Strap, Size 2, 17" - 21.5" (Pair) (862102-2) \$305
- ☐ Cross Strap, Size 3, 20.75" - 27.5" (Pair) (862102-3) \$322
- ☐ Cross Strap, Size 4, 24.75" - 33.75" (Pair) (862102-4) \$322

### Chest Strap

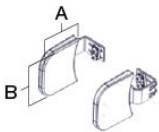
If multiple straps are required, please add to notes section below or contact customer service



- ☐ Chest Strap and Pelvic Strap, Small, W: 16.5" - 24.75" (Each) (862101-2) \$135
- ☐ Chest Strap and Pelvic Strap, Medium, W: 19" - 30.25" (Each) (862101-3) \$135
- ☐ Chest Strap and Pelvic Strap, Large, W: 22.75" - 37.75" (Each) (862101-4) \$135

Quantity:

## Side Supports



### Side Supports, Fixed

- ☐ Supports, Fixed, Size 1 and 2, A: 4.75" x B: 4.25" (Pair) (861102-10) \$273
- ☐ Side Supports, Fixed, Type 5, Size 3 and 4, A: 6" x 6.25" (Pair) (861102-20) \$328



### Removable Lateral Supports

Select desired size(s) state desired quantity in the condensing box below

- ☐ Removable Lateral Supports, Size 1, Bar L: 5.75" Pad H: 5.5" Pad W: 3.75" (Pair) (861102-1) \$425
- ☐ Removable Lateral Supports, Size 2, Bar L: 6.75" Pad H: 7" Pad W: 5" (Pair) (861102-2) \$425
- ☐ Removable Lateral Supports, Size 3, Bar L: 7.75" Pad H: 7" Pad W: 5" (Pair) (861102-3) \$425

Size 1 Quantity:	
Size 2 Quantity:	
Size 3 Quantity:	

### Adjustable Plate for Fixed Side Supports

Adjustable plate used with fixed side support to increase width

- ☐ Adjustable Plate for Fixed Supports (Pair) (861102-PL) \$155

### Straight Mounting Bracket

To be used on the extra cushion.

- ☐ Straight Mounting Bracket for Extra Pad (861106-Kit) \$125

### Lateral Side Supports

For use with the Removable Lateral Supports. Select size then state desired quantity in the box below.

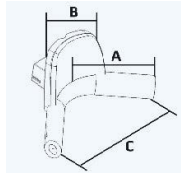


- ☐ Lateral Support Strap, Small: 10-12.5" (Each) (862103-1) \$75
- ☐ Lateral Support Strap, Medium: 13-16" (Each) (862103-2) \$75
- ☐ Lateral Support Strap, Large: 13.5-9.75" (Each) (862103-3) \$75
- ☐ Lateral Support Strap, X-Large: 17.75-23.5" (Each) (862103-4) \$75

Quantity:

## Anatomic Head Support

*Cover and Mounting Hardware required*



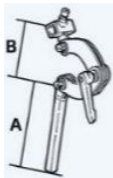
### Anatomic Head Support

- ☐ Anatomic Head Support, Size Small, A: 5.5" x B: 5.5" x C: 9.5" (5099001) \$284.58
- ☐ Anatomic Head Support, Size Medium, A: 6" x B: 5.5" x C: 10" (5099002) \$284.58
- ☐ Anatomic Head Support, Size Large, A: 6.5" x B: 5.5" x C: 12.5" (5099003) \$284.58

## Anatomic Head Support Cover

*If Anatomic Head Support is selected, you must select a cover. Does not come standard.*

- ☐ Head Support Cover, Small (9923-83) N/C
- ☐ Head Support Cover, Medium (9945-83) N/C
- ☐ Head Support Cover, Large (9967-83) N/C



### Headrest Mounting Hardware

*Required with All Head Supports*

- ☐ Headrest Mounting Hardware, Short (98619-25) \$250
- ☐ Headrest Mounting Hardware, Long (98619-26) \$256.02

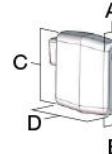
*Other headrest options available, please see Head supports order form. Please verify Compatibility.*

## Head Pad



- ☐ Head Pad, Size 1 and 2 (861116-1) \$575
- ☐ Head Pad, Size 3 and 4 (861116-2) \$575

## Pommel



### Pommel

- ☐ Pommel, Supine, A: 2", B: 2.75", C: 6", D: 3.5" (861103-1) \$150
- ☐ Pommel, Prone, A: 6", B: 2.75", C: 6", D: 6.75" (861103-2) \$195

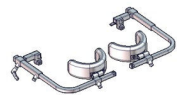


### Straps for Pommels

- ☐ Straps for Pommel, Size 1, L: 9.84" - 11.81" (862104-1) \$175
- ☐ Straps for Pommel, Size 2, L: 10.63" - 18.5" (862104-2) \$175

## Knee Supports

### Knee Support, Fixed



- ☐ Knee Support, Standard Pad, Fixed Bracket, Size 1 and 2 (861144-2) \$575
- ☐ Knee Support, Hinged/Split Pad, Fixed Bracket, Size 1 and 2 (861144-20) \$695
- ☐ Knee Support, Standard Pad, Fixed Bracket, Size 3 and 4 (861144-3) \$575
- ☐ Knee Support, Hinged/Split Pad, Fixed Bracket, Size 3 and 4 (861144-30) \$695

### Knee Support, Swing-Away



- ☐ Knee Support, Standard Pad, Swing Away Bracket, Size 1 and 2 (861154-2) \$855
- ☐ Knee Support, Hinged/Split Pad, Swing Away Bracket, Size 1 and 2 (861154-20) \$1025
- ☐ Knee Support, Standard Pad, Swing Away Bracket, Size 3 and 4 (861154-3) \$855
- ☐ Knee Support, Hinged/Split Pad, Swing Away Bracket, Size 3 and 4 (861154-30) \$1025

## Foot Positioning and Straps

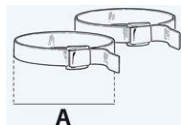


### Adjustable Sandals

- ☐ Adjustable Sandals, Small (869490-RT) \$233
- ☐ Adjustable Sandals, Medium (869491-RT) \$244
- ☐ Adjustable Sandals, Large (869492-RT) \$251

## Additional Straps for Adjustable Sandals

- ☐ Additional Straps, Small/Medium (869497) \$60
- ☐ Additional Straps, Large (869498) \$63.24



### Foot Straps

- ☐ Foot Straps, Plastic Lock (Pair) (85096) (K0040) \$42
- ☐ Foot Straps, Velcro (Pair) (85102) \$59

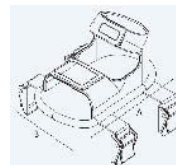


### Heel Support for Parted Foot Support

- ☐ Heel Support for Parted Foot Support, Size 1 and 2 (Pair) (861251) \$61
- ☐ Heel Support for Parted Foot Support, Size 3 and 4 (Pair) (861252) \$71

## Upholstered Ankle Straps

- ☐ Upholstered Ankle Straps, XS (85745-XS) \$202
- ☐ Upholstered Ankle Straps, Medium (85745-M) \$202
- ☐ Upholstered Ankle Straps, XL (85745-XL) \$202



### Neoprene Sandals

- ☐ Neoprene Sandals, Small (Pair) (85696-1) \$165
- ☐ Neoprene Sandals, Medium (Pair) (85696-2) \$165



Tray Accessories



- Tray, Plastic, with Bowls and Cover**
- ☐ Tray, Plastic, with Bowls and Cover, Size 1 and 2 (Each) (862130-2) \$775
  - ☐ Tray, Plastic, with Bowls and Cover, Size 3 and 4 (Each) (862130-3) \$795



- Tray Armrests**
- ☐ Armrest for Plastic Tray (861131) \$225

**Push Handle**

- ☐ Attendant Push Handle (861108-U) \$175

**Mounting Kit**  
*For supine use only*

- ☐ Low Mount Kit for Plastic Tray (862131-KIT) \$255



- Toybar for Plastic Tray**
- ☐ Toybar for Plastic Tray (861135) \$262

**Padded Tray Tops**

- ☐ Square Padded Tray Top (862135-0) \$395
- ☐ Small Rounded Tray Top (862135-1) \$395
- ☐ Large Rounded Tray Top (862135-2) \$395