



ActiveAid **BCB**

INSTRUCTIONS FOR USE



Please ensure these instructions stay with the product at all times.

A copy can be downloaded from our website **activeaid.com**

Note: The information contained in this document is subject to change without notice.

Dealer/Supplier: Please make sure the user of this shower commode chair receives and understands the product information.

Operator (User or Caregiver): Before using this shower commode chair, read the instructions and save for future reference.

SYMBOL LEGEND



CAUTION



WARNING

SN

SERIAL NUMBER

MD

MEDICAL DEVICE



SEE INSTRUCTIONS FOR USE



DATE OF MANUFACTURE



MANUFACTURER

UDI

UNIQUE DEVICE IDENTIFIER

CERTIFICATION LABEL/UNIQUE DEVICE IDENTIFICATION LABEL

Serial Number

Item Number
Item Description



Manufacturer:
Altimate Medical, Inc
262 West First Street
Morton, MN 56270 USA
+1 507-697-6393



2025



SN AA2TEST00000



(01)10858921006222(21)AA2TEST00000



Model: ActiveAid BCB
Max. Weight Limit: 350 lbs / 158 kg
Equipment Mass: 44 lbs / 20 kg

Unique Identifier

Serial Number



Date Purchased _____ Serial # _____

TABLE OF CONTENTS

Introduction	1
Product Description	1
Intended Use	1
Indications for Use	1
Contraindications	1
Essential Function and Performance	1
Expected Life	1
Product Disposal	1
Safety Features	1
Serious Incidents/Adverse Events	1
Safety Precautions	2
Product Specifications	3
Biocompatibility and Allergen Statement	4
Product Materials	4
Recommended Use, Storage and Transport Conditions	4
Assembly Instructions (Intended for Dealer/Distributor use only)	5
Fitting and Adjusting	10
Preventive Maintenance	15
Re Issue Policy	15
Cleaning & Care Information	15
Statement of Compliance	15
Parts Replacement	16
Parts Detail	16
Limited Warranty	17

INTRODUCTION

This manual is an integral part of your Shower/Commode Chair product and should be read completely and thoroughly by anyone that will be operating the unit. This will ensure the product is assembled properly and used in the most beneficial manner.

If you find the font size is too small to read, this manual is available online for viewing at activeaid.com. The PDF can then be scaled on screen to a font size that is more comfortable for you.

If you are unable to understand the warnings, cautions, or instructions, please contact a healthcare professional, ActiveAid equipment provider, or qualified technician before attempting to use this product.

Product Description

ActiveAid shower/commode products are intended for users who are able to transfer independently or with assistance from a caregiver. They are a useful tool for rehabilitation or home use. ActiveAid shower/commode products can be configured to meet the specific needs of an user. It may be used over most toilets or independently with the commode pan (optional).

Intended Use

ActiveAid shower/commode products are intended to assist disabled users in performing activities of daily living (toileting and showering).

This device is designed and intended for shower/commode use in accessibility compliant environments. Accessibility compliant environments generally outline that flooring surfaces are to be stable, firm and slip resistant with thresholds up to 1/2". If ground and floor surfaces are encountered that are not within the appropriate accessible standards, the area in question should be brought within the code for disability accessibility before using the device.

The device is intended for indoor use in home environments or institutions and is suitable for use in bathrooms, but not swimming pools or similar corrosive environments.

Secondary users of the device are caregivers providing assistance and medical professionals who set up the device.

This product is not intended to be dismantled for transport.

The shower/commode chair is not intended as a long-term seating system.

Indications for Use

The Shower/Commode Chair is indicated for most individuals weighing up to 350 lbs. (158kg).

Indication for use by people who may have limited mobility, difficulty standing or keeping their balance, or users with disabilities such as spinal cord injuries, paraplegia, muscular dystrophy, multiple sclerosis, cerebral palsy, and spina bifida.

Contraindications

Users that need more postural support than what is offered by a backrest and armrest.

Expected Life

The expected life of the product is 3 years when used daily and in accordance with the safety instructions, maintenance intervals, and correct use as stated in this manual. The effective service life can vary according to frequency and intensity of use.

Some components may have a shorter life based on frequency and intensity of use and require replacement.

Note: See Warranty section for warranty information.

Product Disposal

At the end of the product's life, please be environmentally responsible and recycle this product through appropriate recycling facilities according to local, state or national regulations. After disassembly of the product, sort the components based on what they are made of and recycle them individually.

Serious Incidents/Adverse Events

If a serious incident were to occur in relation to your device, please report this incident to Altimate Medical, Inc. If you are unable to report to Altimate directly, you may report this to your medical equipment Dealer/Distributor or the Authorized Representative/Responsible person, who will then report the incident to Altimate.

For customers in the European Union, please also report the incident to the Competent Authority in the Member state in which you are located.

SAFETY PRECAUTIONS

Please read and understand all safety precautions and user instructions prior to use.
Call Altimate Medical, Inc. with any questions or for additional information

Altimate Medical, Inc. manufactures a wide variety of shower commode chairs to meet the varied needs of users. However, Altimate is not a healthcare advisor and does not know the needs and medical condition(s) of each user. The selection of a shower commode chair, how it is adjusted, and types of options used is the responsibility of the user and a qualified medical professional. Failure to follow all considerations and safety information may result in serious bodily injury.

- The shower/commode chair should only be used under the guidance of a medical professional. Consult your medical professional for proper transfer techniques
- Do not exceed the maximum individuals weight limit. The Shower/Commode chair is designed to accommodate most individuals up to 350 lbs. (158kg).
- The expected service life of the product is 3 years under normal use conditions.
Note: this may vary based on frequency of use.
- The user is an intended operator.
- The shower/commode chair is not intended for use as a long-term seating system.
- Users without sensation should perform pressure relief and skin assessments while utilizing equipment to reduce the risk of skin breakdown.
- Do not use the shower commode chair if the user's body is too wide for the chair. Using a chair that is too narrow may cause injury or discomfort or damage to the chair.
- Altimate Medical products are specifically designed to be used with Altimate Medical accessories and options. Unless otherwise noted, accessories and options from other manufacturers have not been tested by Altimate Medical and are not recommended for use with Altimate Medical products.
- Product modifications made without express written consent (including but not limited to, modification using unauthorized parts or attachments) are not recommended and will void the product warranty.
- This equipment is designed to accommodate a range of users; therefore, the unit has various adjustment slots and holes. Avoid placing fingers or other body parts in any of these areas.
- Please dispose of packaging materials properly.
- Keep plastic bags away from children.
- Do not make height adjustments while seated.
- Do not lift the shower/commode chair by the armrest or backrest.
- Altimate Medical shower/commode chairs are designed for accessibility compliant indoor use only.
- The equipment shall only be used with flooring surfaces that are stable, firm, and slip resistant.
- Do not submerge the shower/commode chair. Damage to the components may result.
- Suitable for use in wet environments, but not pools or similarly corrosive environments.
- Do not stand or kneel on the product.
- Do not use as a climbing aid.
- Do not use outdoors.
- Extreme movements laterally or front to back may cause the unit to tip. These movements will cause a change to the normal center of gravity of the chair. (i.e., leaning forward, leaning over the edge, attempting to pick up objects from the floor).
- Utilize safe transfer techniques as outlined by your healthcare professional.
- Avoid placing full body weight on a single armrest during a transfer or pressure relief.
- Do not use product if parts are damaged or worn.
- Self-locking screws/nuts or thread-locking adhesives are used for several connections. If these are loosened, they must be replaced by new self-locking screws/nuts or they must be secured using new thread locking adhesive.
- Do not insert fingers into the joint when folding the arm rests up or down.
- Do not insert fingers between the armrest and the backrest when folding back the armrests.
- Do not expose the product to direct sunlight.
- When a user is seated on the chair, ensure that all body parts are clear before sliding the lid in the commode pan.



Caution: Check all fasteners before operating.



Caution: It is necessary to periodically check all fasteners (snap buttons, screws, nuts, bolts, clips, pull pins, handles, etc.) to ensure they are secure.



Warning: The product may become hot when exposed to external heat sources such as a fireplace, radiant warmer, etc.



Warning: Do not keep/use this product near a source of ignition.



Warning: Finger trap hazard. Keep fingers clear of the arm and bench mounting locations.

PRODUCT SPECIFICATIONS

ADDITIONAL SPECIFICATIONS MAY BE FOUND IN THE SPECIFICATIONS SECTION AT ACTIVEAID.COM

Description	Specifications	
	Imperial	Metric
Weight limit	350 lbs	158.8 kg
Seat to floor height	19.5 - 22.5 in	49.5 - 57.1 cm
Overall frame width	20.25 in	51.4 cm
Overall width with narrow bench	29 - 30 in	73.7 - 76.2 cm
Overall width with wide bench	34 - 35 in	86.4 – 88.9 cm
Overall frame length (front to back)	18.25 in	46.4 cm
Overall length with backrest	21.25 in	54.0 cm
Overall length with sling back rigidizer	24 in	61.0 cm
Overall length with fixed handles	26.75 in	67.9 cm
Overall length with fold-down handles	23.75 – 27.5 in	60.3 – 69.9 cm
Seat dimensions	18 x 18 in	45.7 x 45.7 cm
Narrow bench dimensions	20 x 9 in	50.8 x 22.9 cm
Wide bench dimensions	20 x 14 in	50.8 x 35.6 cm
Distance between bench cushion and seat cushion	0.5 - 1.5 in	1.3 - 3.8 cm
Transfer bench to floor height	19.5 - 23.5 in	74.9 – 59.7 cm
Under seat height clearance	16.75 - 19.75 in	42.5 - 50.2 cm
Under seat width clearance	14.5 in	36.8 cm
Tub wall clearance height	16.75 – 20.75 in	42.5 – 52.7 cm
Tub support bench height adjustment	2 in	5.1 cm
Top of tub support bench to bottom of tub support feet	6.5 – 8.5 in	16.5 – 21.6 cm
Adjustable armrest height from top of seat	8 – 14.5 in	20.3 – 36.8 cm
Fixed 2-point armrest height from top of seat	9 in	22.9 cm
Width between arm rests	18.25 in	46.4 cm
Back height from top of seat	12.5 - 16.5 in	31.8 – 41.9 cm
Back angle	7°	7°
Weight of frame & seat	22 lbs	10.0 kg
Weight of backrest	8.75 lbs	4.0 kg
Weight of narrow bench	9 lbs	4.1 kg
Weight of wide bench	12.75 lbs	5.8 kg
Floor to Crossbar Height	7.5 – 10.5 in	19.1 – 26.7 cm
Outside of Crutch Tip to Outside of Crutch Tip Width	17.5 in	44.5 cm

PRODUCT SPECIFICATIONS

BIOCOMPATIBILITY AND ALLERGEN STATEMENT

The materials used in the construction of Altimate Medical products are specified to be as inert and non-allergenic as possible, with the greatest emphasis on medical benefit to the widest range of user. Users which have known sensitivities to certain materials may inquire for specific information on specific components.

LATEX INFORMATION

Not made with natural rubber latex.

MATERIALS

ATTRIBUTE	DESCRIPTION
Frame	Stainless Steel, Aluminum, Nylon 66,
Other metal components	Stainless Steel, Aluminum
Other plastic components	PLA Plastic, Urethane 70D, EPDM Rubber, Low-Density Polyethylene, Nylon-GF30
Seats	Vinyl, PU Leather Skinned Urethane Foam
Backs	Urethane Self-Skinning Foam
Fabrics	Polypropylene Webbing, Nylon Fabric with Urethane Coat
Finishes	Powder Coat, Anodize
Pads (arm rests)	Urethane Self-Skinning Foam
Belts	Polyester Webbing, Aeromesh
Commode Pan	Polypropylene, Nylon-GF33

RECOMMENDED ENVIRONMENTAL CONDITIONS

The shower/commode chair consists of materials which are not significantly impacted by temperature, relative humidity, or atmospheric pressure. These are typical ranges for use, storage and transportation for the materials used in the product.

ATTRIBUTE	RANGE FOR USE	RANGE FOR STORAGE AND TRANSPORT
Ambient Temperature	+5°C to +40°C	-10°C to + 50°C
Relative Humidity	20%-80%	20%-80%
Atmospheric Pressure	86kPa-106kPa	86kPa-106kPa

PRODUCT FEATURES

ADDITIONAL OPTIONS MAY NOT BE SHOWN

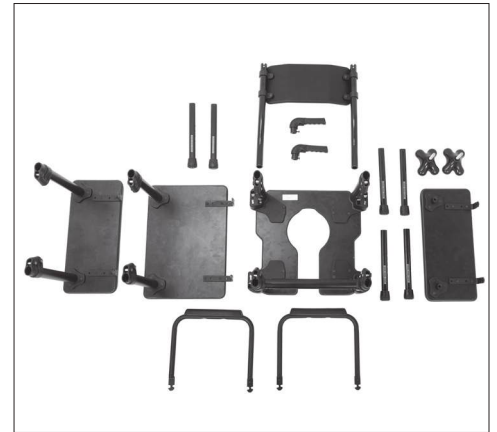


ASSEMBLY

Do not over-tighten hardware attaching any options to the frame. This could cause damage to the frame tubing or permanent damage to the threaded fastener or option. Allow the device to come to room temperature before assembling. Self-locking screws/nuts or thread-locking adhesives are used for several connections. If these are loosened they must be replaced by new self-locking screws/nuts or they must be secured using new thread locking adhesive.

1. Remove all parts from the shipping box. Remove all packaging and lay parts out.

Note: The H-frame is pre-assembled to the commode frame based on the orientation of the seat opening. Do not reposition or remove the H-frame.



2. There are two sets of leg extensions. Each set is identified by teal markings and is intended for a specific assembly.

Commode Chair Leg Extensions-4 Teal Markings (4 Legs)

Leg extensions with four teal markings are designed for use with the commode chair.

Transfer Bench Leg Extensions-5 Teal Markings (2 Legs)

Leg extensions with five teal markings are designed for use with the transfer bench.



3. Install the commode chair leg extensions by depressing the spring clip and inserting each leg extension into the frame with the adjustment holes facing toward the inside of the frame.

Repeat this step for all four legs extensions.

Transfer bench leg extensions will be added in a later step.

Note: Ensure all leg extensions are adjusted to the same height and that the spring clips are fully engaged in the adjustment holes, locking the leg extensions securely in place.



4. If the pan was ordered, the pan brackets must be installed.

Remove the two bolts securing the seat.

If the pan hanger was not ordered, skip to step 13.

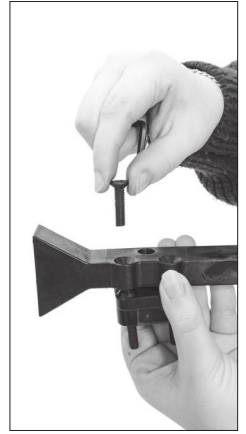
Pan Brackets and Spacers



ASSEMBLY

5. The pan brackets will need to be disassembled before installation. Using an allen wrench, remove the bolts from the pan bracket assembly separating the spacer block and spacers from the bracket. Set aside the bolts for later use.

Note: The longer bolts secure the spacer(s) to the seat. The shorter bolts will secure the commode pan track to the spacers.



6. Remove the tape from the spacer block and spacers, discard tape. Remove the plug and spring from the assembly and separate the spacer block.



7. Place the spacer block onto the spacers as shown, with the lip of the spacer block facing towards the outside of the unit and cone shapes facing up.

Note: The longer bolts secure the spacer(s) to the seat. The shorter bolts will secure the commode pan track to the spacer.

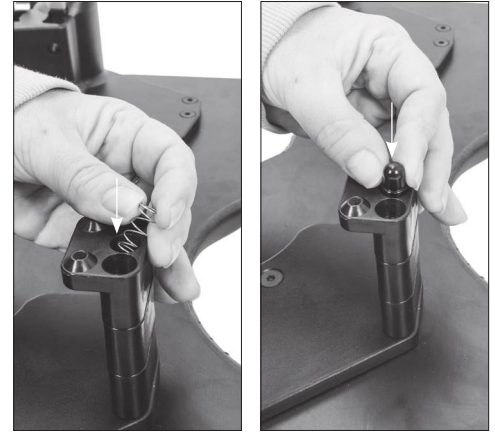


8. Tighten bolts securely.



ASSEMBLY

9. Insert the spring into the middle hole of the spacer block. Insert the black plug into the middle hole of the spacer block, making sure the rounded end of the black plug is upright.



10. Place the commode pan track onto the spacer block as shown, lining up the holes and the track opening facing towards the center of the seat.



11. Insert the 2 shorter bolts and tighten securely. Repeat Steps 4-11 for the other pan bracket.

Note: The longer bolts secure the spacer(s) to the seat. The shorter bolts will secure the commode pan track to the spacers.

If the commode pan is no longer required, remove the pan brackets and use the four shorter bolts to secure the seat directly to the frame.



12. Flip the unit back onto the legs. Insert the pan into the pan brackets.



ASSEMBLY

13. If not already done, position the chair in an upright position. If a back option was ordered, install the back onto the frame as shown.

Depress the spring clips under the seat and ensure the back is fully engaged and locked into the frame.



14. If the handles were ordered, remove the bolt from the handle.



15. Insert the handle onto the back frame tube. Insert the bolt and tighten securely.

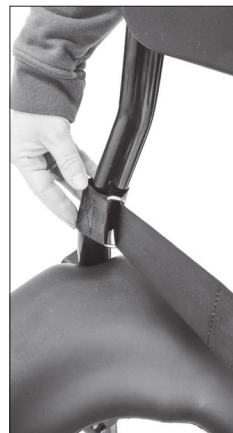
Repeat these steps for the other handle.



16. If the waist belt was ordered, wrap the waist belt around the back tube. Insert one end of the waist belt through the D-ring and pull tight.

Repeat this step for the belt on the opposite side.

Press the waist belt strips together to secure.



ASSEMBLY

17. If the tub supported short transfer bench was ordered, place bench as shown, insert the quad grip support onto the post.

Press down firmly to secure quad tip onto the post.

Repeat these steps for the other quad tip.



18. Insert the 2-point locking armrest into the slots on the frame and press down until it locks into place.

Repeat step if the both 2-point locking armrests were ordered.

Note: Armrest installs one way only. If it doesn't lock, flip and reinsert. Front and rear spring clips depress in different directions, depending on their location on the commode.

A 2-point locking armrest and transfer bench cannot be used on the same side of the chair at the same time.

⚠ Caution: Do not over-depress the spring clips. Refer to page 11 for correct usage.

⚠ Warning: Finger trap hazard. Keep fingers clear of the arm and bench mounting locations.



19. Install the transfer bench leg extensions by depressing the spring clip and inserting each leg extension into the frame with the adjustment holes facing toward the inside of the frame.

Repeat this step for all four legs extensions.

Note: Ensure all leg extensions are adjusted to the same height and that the spring clips are fully engaged in the adjustment holes, locking the leg extensions securely in place.



20. Insert the transfer bench into the slots on the frame and press down until it locks into place.

Note: The transfer bench may be installed on either side. Adjust all leg extensions to the same height and ensure the spring clips are fully engaged in the adjustment holes. The front and rear spring clips depress in different directions depending on their location on the commode.

A 2-point locking armrest and transfer bench cannot be used on the same side of the chair at the same time.

⚠ Caution: Do not over-depress the spring clips. Refer to page 11 for correct usage.

⚠ Warning: Finger trap hazard. Keep fingers clear of the arm and bench mounting locations.



ADJUSTING

SOLID BACK HEIGHT

To adjust the height of the solid back, using a allen wrench, loosen the 4 bolts on each back clamp, move into desired position. Tighten bolts securely.



SLING BACK ADJUSTMENTS

The straps on the sling back can be loosened or tightened at the rear of the back. Ensure all four clips are securely fastened.



REMOVE BACK

Depress the two spring clips beneath the seat to release the back. Once released, lift the back upward to remove it, ensuring both sides are raised evenly to avoid binding.



2-POINT ARMREST REMOVAL

To remove the 2-point armrest, depress the two spring clips located beneath the seat to release the armrest.

Note: The front and rear spring clips depress in different directions depending on their location on the commode.

Repeat steps for the other 2-point armrest if equipped.



ADJUSTING

2-POINT ARMREST/BENCH SPRING CLIP CORRECT POSITION

⚠ Caution: Do not over-depress the spring clips. Pushing past the locking point will cause the clips to remain open and may result in the 2-point armrest or bench not locking securely. Pull up on the 2-point armrest or bench to ensure the clips are fully engaged.

Press the spring clip only until the 2-point armrest or bench lock into place.

The clip should fully engage and securely lock the 2-point armrest or bench.

Ensure all spring clips on the unit are in the locked position



2-POINT ARMREST/BENCH SPRING CLIP INCORRECT POSITION

Do NOT over-depress the spring clip.

If pushed past the locking point, the clip will lock in the open position and will not securely hold the 2-point armrest or bench.



FLIP-UP ARMREST

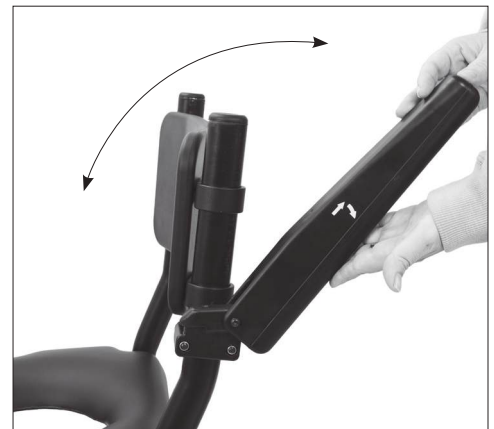
To flip up the armrest, pull the armrest towards the front of the unit.



FLIP-UP ARMREST

Lift the armrest to the upright position to keep it clear for user access.

Repeat steps for the other flip-up armrest if equipped.



ADJUSTING

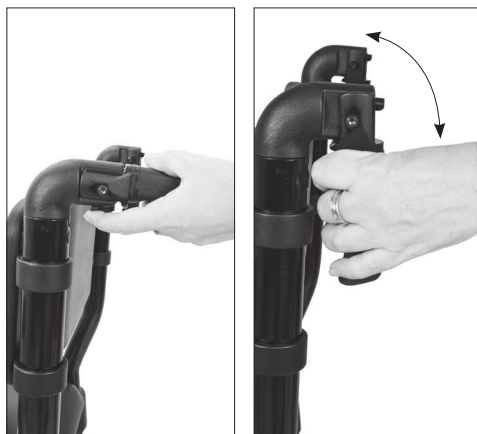
FLIP-UP ARMREST HEIGHT

To adjust the height of the armrests, loosen the two bolts on the armrest clamp, move into desired position. Tighten bolts securely.



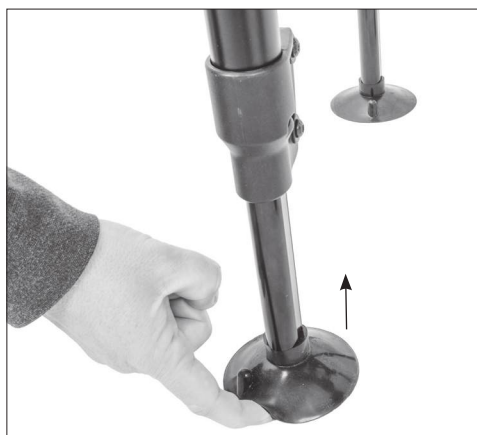
FOLD-DOWN PUSH HANDLES

The fold-down push handles can be lowered by pulling the release lever and folding them down out of the way.



SUCTION CUPS

Rinse and dry the suction cups prior to use to remove any dust, etc. Clean, rinse and dry the smooth flat flooring surface which they are intended to stick to (removing any mineral deposits, soap scum, etc.) Press each individual suction cup into the smooth flooring surface. To move the unit with suction cup option, break the seal of the suction cup first by lifting on the lip of the cup to allow air to get into it.



LEG HEIGHT

To adjust the commode leg height, depress the spring clip located on the leg and move the leg to the desired height position. Ensure the spring clip fully locked into place.

Note: Each teal diamond indicates a height setting. Ensure all leg extensions are adjusted to the same height and that the spring clips are fully engaged in the adjustment holes, locking the leg extensions securely in place.

⚠ Caution: Do not over-depress the spring clips. Pushing past the locking point will cause the clips to remain open and may result in the 2-point armrest or bench not locking securely. Pull up on the 2-point armrest or bench to ensure the clips are fully engaged.



ADJUSTING

TUB SUPPORTED SHORT TRANSFER BENCH: LEG HEIGHT

To adjust the transfer bench leg height, depress the spring clip located on the leg and move the leg to the desired height position. Ensure the spring clip fully lock into place.

Note: Each teal diamond indicates a height setting. Ensure all leg extensions are adjusted to the same height and that the spring clips are fully engaged in the adjustment holes, locking the leg extensions securely in place.

⚠ Caution: Do not over-depress the spring clips. Pushing past the locking point will cause the clips to remain open and may result in the 2-point armrest or bench not locking securely. Pull up on the 2-point armrest or bench to ensure the clips are fully engaged.



TUB SUPPORTED SHORT TRANSFER BENCH: QUAD TIP HEIGHT

Adjust the quad tip bench support heights as needed so the quad tips sit flat on the bathtub wall, the bench rests flush and stable on the floor, and the connection between the frame and the tub support bench is not bowed. Unscrew the quad tip to increase the distance between the tub wall and the bench, and screw in the quad tip to reduce the distance.



BELTS AND STRAPS

WAIST BELT-HOOK AND LOOP FASTENERS

Pull the belt strips apart to separate them. Adjust the strips to the proper position. Press the belt strips together to connect them.



BODYPOINT® TRUNK BELT-SNAP FIT BUCKLE

To unbuckle, depress the two spring arms on the male end and pull/slide to separate it from the female receiver.

To buckle, insert the male end into the female receiver until the spring arms secure. Listen for clicking sound to indicate it is secure. Pull strap thru male portion of buckle to tighten.



ADJUSTING

BODYPOINT® TRUNK BELT-POSITIONS

The BodyPoint® trunk belt offers three depth positions. To adjust to the desired depth, use an Allen wrench to remove the bolt, reposition the belt by aligning it with the preferred hole location, then insert the bolt and tighten securely.



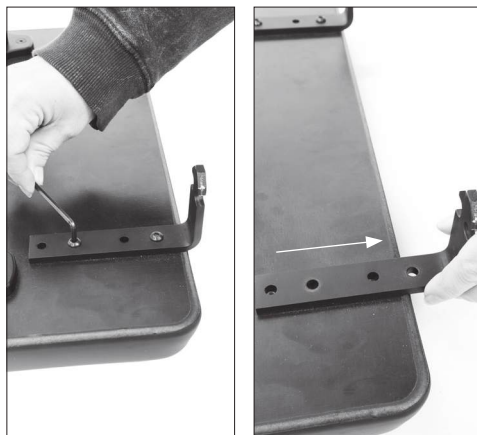
BODYPOINT® BELT W/QUICK RELEASE KNOBS

To adjust to the desired depth, loosen the quick release knob and remove, reposition the belt by aligning it with the preferred hole location, then insert the quick release knob and tighten securely.



TRANSFER BENCH GAP

To adjust the bench gap to fit your tub, flip the transfer bench upside down. Using an allen wrench, remove the mounting bolts, align the bench holes with the bracket holes to achieve 1" of adjustment.



Reinstall and fully tighten the bolts.

Repeats steps for the other bracket.

Ensure the bench is securely fastened before use.



PREVENTIVE MAINTENANCE

A regular preventive maintenance program should be established for all Altimate Medical, Inc. equipment to ensure it is in safe operating condition. It is necessary to inspect your Shower/Commode chair at least weekly to ensure it is in safe operating condition. Preventive maintenance may need to be performed more frequently based on the usage level of the product.

This section applies to all people that may interact with the equipment including attendants, caregivers and service personnel.

Recommended Preventive Maintenance should include:

- Check all fasteners (snap buttons, screws, nuts, bolts, clips, pull pins, handles, etc.) to ensure they are present and secure.
- Check upholstery for tears and cracks.
- Check belts for fraying, cuts, tears, broken/worn stitching and buckles for cracks or damage.
- Check suction cups and crutch tips for flat spots, cracks and wear.

Discontinue use of the product if any of the checks fail and contact your Dealer/Distributor for replacement of worn or damaged parts.

Use only recommended ActiveAid replacement parts; use of any other parts may void your warranty and cause damage to your device.

RE-ISSUE POLICY

When an ActiveAid shower/commode chair is transferred to a secondary user, it should go through an inspection and refurbishment process with any worn components or components that show signs of material degradation being replaced. Shower/commode products are used for activities of daily living such as toileting and bathing, any upholstered contact surfaces should be replaced due to the high probability of soiling by the previous user. The inspection and refurbishment should be carried out by a technically competent person. The expected service life of an Altimate Medical shower/commode chair product is considered 3 years under normal use conditions. Altimate Medical does not recommend re-issuing any product that is past its expected service life.

CLEANING & CARE INFORMATION

- Approved cleaning for all parts of the chair include a non-abrasive, non-alcohol-based soap, germicidal wipes that are rated to kill C-difficile spores, or sanitized using a bleach dilution of up to 1:10. Note, many anti-bacterial and disinfectant products contain alcohol and should not be used on the seats upholstery, due to the drying effect of the alcohol. Choose a non-alcohol-based sanitizer.
- After each shower use, rinse the device with water to remove soap residue. Using a soft non-abrasive cloth or sponge, wipe the device down to remove water accumulation and product build up. Allow it to dry completely before storing.
- After each use of the commode pan, wash the pan with a disinfectant cleaning solution and soft bristle brush. The pan may be autoclaved at the following temperature, time, and pressure: 121° C, 30 minutes, and 15 psi.

STATEMENT OF COMPLIANCE

The ActiveAid BCB is listed as a Class I Medical Device under US FDA Regulation 890.3100/Code INN, and is Class I under Canadian Medical Device Regulation Schedule 1 per Rule 7.

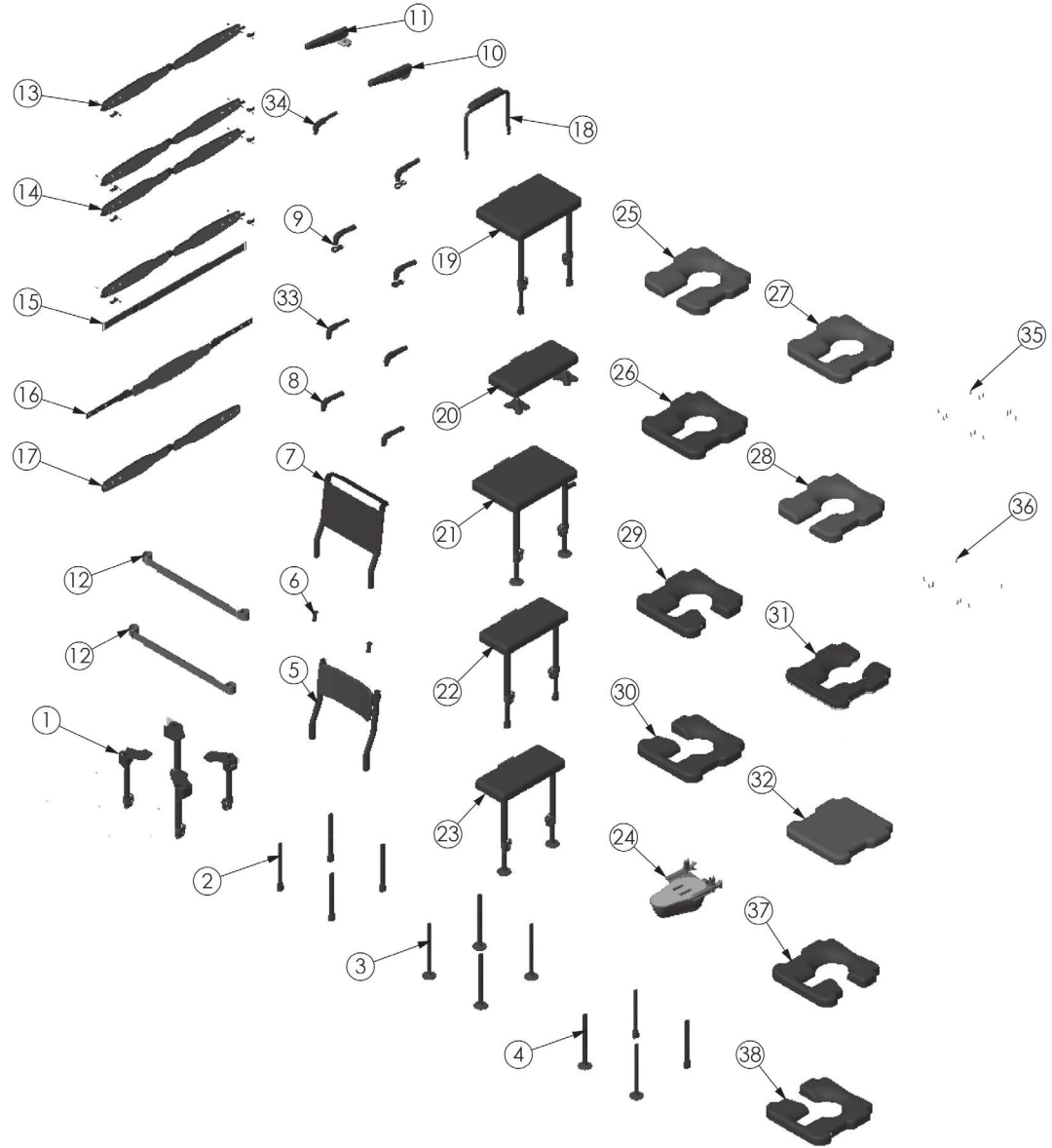
Altimate Medical is certified in compliance with ISO 13485 Medical Devices – Quality Management System – Requirements for regulatory purposes.

Altimate Medical, Inc has tested the ActiveAid BCB and it conforms to the requirements of ISO 17966 Assistive Products for personal hygiene that support users – Requirements and test methods. Additionally, it has utilized IEC 62366 Usability Engineering for Medical Devices and ISO 14971 Risk Management in Medical Devices, and ISO 10993-1 Biological evaluation of medical devices in its design and development.

PARTS REPLACEMENT

Contact your Dealer/Distributor to request replacement for worn or damaged components. Please have the serial number available when you call. Your Dealer/Distributor will contact Altimate's Customer Service to obtain the necessary items for your specific device.

PARTS DETAIL



ITEM NO.	PART NO.	NAME	ITEM NO.	PART NO.	NAME
1	H5000	BCB FRAME	20	H5801	SHORT TRANSFER BENCH
2	H5011	LEG W/ CRUTCH TIP	21	H5802	WIDE FLOOR TRANSFER BENCH - SUCTION CUPS
3	H5012	LEG W/ SUCTION CUP	22	H5803	NARROW FLOOR TRANSFER BENCH - CRUTCH TIP
4	H5013	2 SUCTION CUP LEGS, 2 CRUTCH TIP LEGS	23	H5804	NARROW FLOOR TRANSFER BENCH - SUCTION TIP
5	H5101	BACKREST ASSEMBLY	24	C5702	COMMODE PAN/HANGER/SPACERS - 3" DROP
6	H5110	CAPPED BACK TUBES, SOLID BACK	25	H5901	BCB Front Open Seat - Gel
7	H5102	BCB SLING BACK	26	H5902	BCB CLOSED SEAT - FOAM
8	C5140	FIXED HANDLE - PAIR	27	H5903	BCB CLOSED SEAT - GEL
9	C5150	FIXED HANDLE - SLING BACKS	28	H5904	BCB FRONT OPEN SEAT - FOAM
10	H5200	FLIP-UP ARMREST, HEIGHT ADJUSTABLE LEFT	29	H5905	BCB LEFT OPEN SEAT - FOAM
11	H5201	FLIP UP ARMREST, HEIGHT ADJUSTABLE - RIGHT	30	H5906	BCB RIGHT OPEN SEAT - FOAM
12	T60884	BELT WITH D-RING	31	H5907	BCB REAR OPEN SEAT
13	C5310	Bodypoint Belt Assembly	32	H5908	BCB SOLID SEAT
14	C5311	Bodypoint Belt Assembly - Pair	33	C5141	FOLDING PUSH HANDLE - PAIR
15	C5312	Bodypoint Trunk Belt & Waist Belt	34	C5151	FOLD DOWN HANDLE - SLING BACKS
16	C5313	BODYPOINT TRUNK BELT XL	35	H5909	BCB SEAT HARDWARE - NO COMMODE PAN
17	C5314	BODYPOINT BELT WITH QR KNOBS	36	H5910	BCB SEAT HARDWARE - WITH COMMODE PAN
18	H5210	2-POINT ARMREST	37	H5911	BCB LEFT OPEN SEAT - GEL
19	H5800	WIDE FLOOR TRANSFER BENCH - CRUTCH TIP	38	H5912	BCB RIGHT OPEN SEAT - GEL

WARRANTY

This warranty is extended only to the original purchaser/customer (or supplier non consumer who does not buy or resell). Altimate Medical, warrants the device against defects in materials and workmanship as listed below.

- Frames – 3 year warranty
- Locking mechanisms – 1 year warranty
- Other metal and structural parts – 1 year warranty
- Upholstered components, plastic pads, rubber parts, painted surfaces, other parts not specifically identified above – 90 day warranty

The warranty period commences on the original ship date from Altimate Medical. Any product proven to Altimate Medical's satisfaction to be defective and within warranty period shall be repaired or replaced at Altimate Medical's option.

Altimate Medical's SOLE OBLIGATION AND YOUR EXCLUSIVE REMEDY UNDER THIS WARRANTY SHALL BE LIMITED TO SUCH REPAIR AND/OR REPLACEMENT. This warranty does not include any labor charges incurred in replacement parts installation. For warranty service, please contact the authorized supplier from whom you purchased your Altimate Medical product. In the event you do not receive satisfactory warranty service, please contact Altimate Medical at the address below.

Do not return products to our factory without prior authorization.

LIMITATIONS AND EXCLUSIONS: The foregoing warranty shall not apply to serial numbered products if the serial number has been removed or defaced. Products subject to negligence, abuse, misuse, improper maintenance, improper storage, or damages beyond Altimate Medical's control are not covered by this warranty, and that evaluation will be solely determined by Altimate Medical. Products modified without Altimate Medical's express written consent (including but not limited to, modification through the use of unauthorized parts or attachments) are not covered by this warranty. The warranty shall not apply to problems arising from normal wear or failure to follow instructions. The warranty will be void if parts not manufactured by Altimate Medical or parts not complying with original equipment specifications are added to an Altimate Medical product.

THE FOREGOING WARRANTY IS EXCLUSIVE AND IN LIEU OF ALL OTHER EXPRESS WARRANTIES. Altimate Medical SHALL NOT BE LIABLE FOR ANY CONSEQUENTIAL OR INCIDENTAL DAMAGES WHATSOEVER.

Altimate Medical maintains a policy of continual product improvement and reserves the right to change features, specifications, and prices without prior notification. Check with Altimate Medical for latest information.

