



Ride Designs® Java® Back Supports

Accurate fit for peak performance



New: Lighter, more rigid hardware with a simpler, compact profile!

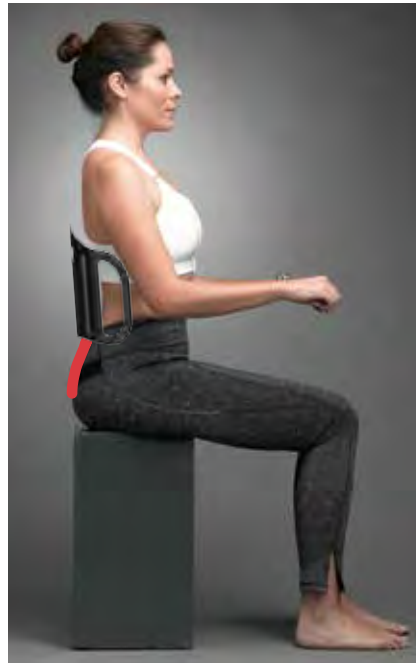
JAVA[®]

Biomechanically Designed

Java's patented design provides the flexibility to accurately fit the trunk and pelvis for superior support, comfort, and mobility.

**People are not flat.
Java recognizes that.**

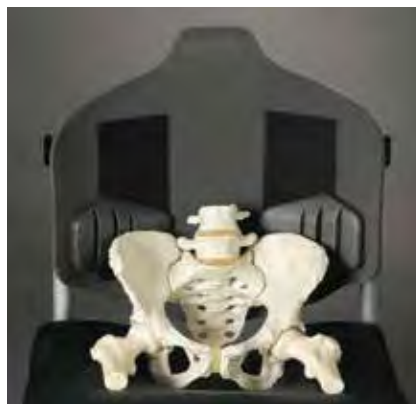
Other back supports are flat from top to bottom making accurate fit virtually impossible.



How we do it...

**Install and fit —
in less time than it takes
to drink your half-caff-
double-tall-nonfat-
extra-foamy latte!**

1. Place pivot at PSIS. No loss of pelvic support with back angle adjustment.



2. Personalize contour at pelvis and buttocks with included accessories.



3. Strike a balance between support and freedom of movement. The Grande shell helps stabilize the spine, while the flexible insert promotes shoulder and arm mobility.



THREE heights and TWO depths available in each size...

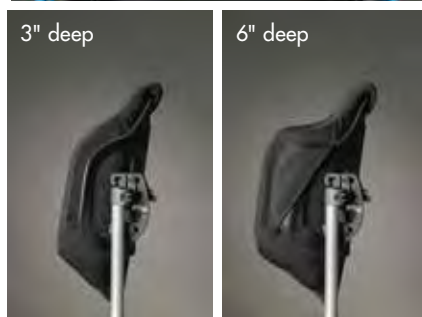
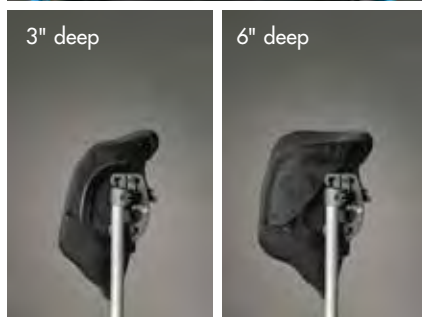
Regular: Below Scapulae



Tall: Mid Scapulae



Grande: Top of Shoulder



Accessorize

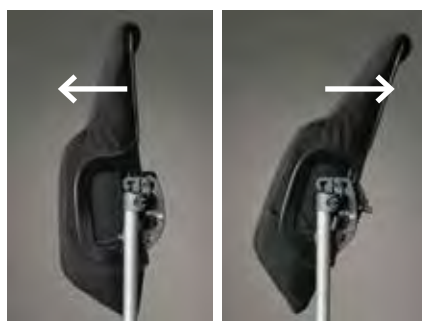


Accessorize with:

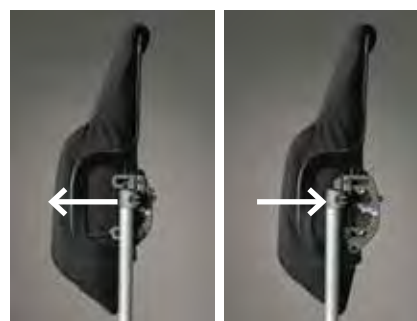
- Fixed or swing-away lateral trunk supports*
- Head supports
- Shoulder harness
- Privacy flap*

NEW hardware advantage: lighter, more rigid

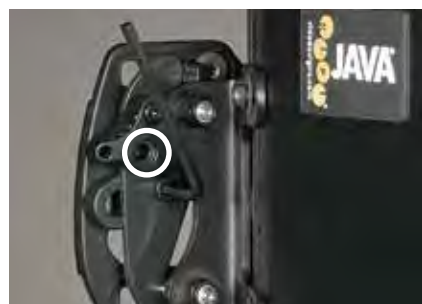
The Java Back Support's new highly-adjustable, quick release hardware is lighter and more compact, making for a quick fit and easy daily use.



20° of back angle



2" seat depth range



*Available through Ride Designs.

Java Back Supports Specifications

General Specifications

Weight capacity: 300 lbs. / 136kg

Limited Warranty: Two years

Insert material: ¾" polyurethane over ¼" closed cell foam

Cover material: Polyester spacer fabric laminated to vapor permeable urethane

Shell material: Aluminum



| Model Version | Java Back | | Tall Java Back | | Grande Java Back | |
|--|-------------|-------------|----------------|-------------|------------------|-------------|
| | Regular | Deep | Regular | Deep | Regular | Deep |
| Total weight (16"/41cm widths) | 4.5lb/2.0kg | 4.8lb/2.2kg | 5.0lb/2.3kg | 5.4lb/2.5kg | 6.2lb/2.8kg | 6.6lb/3.0kg |
| HPCPS code | E2615 | E2620 | E2615 | E2620 | E2615 | E2620 |
| Back Shell & Insert Specs | | | | | | |
| Contour depth | 3" | 6" | 3" | 6" | 3" | 6" |
| Widths: 14"/36cm - 20"/51cm | | | | | | |
| Heights | 14"/36cm | 14"/36cm | 18"/46cm | 18"/46cm | 22"/56cm | 22"/56cm |
| Carrying weight (insert and shell weight, 16"/41cm widths) | 2.7lb/1.2kg | 3.0lb/1.3kg | 3.2lb/1.5kg | 3.6lb/1.7kg | 4.4lb/2.0kg | 4.8lb/2.2kg |
| Lateral support compatible | yes | no | yes | no | yes | no |
| Headrest compatible | no | no | yes | yes | yes | yes |
| Privacy flap compatible | yes | yes | yes | yes | yes | yes |
| Shoulder harness compatible | no | no | no | no | yes | yes |

Hardware Specifications

Weight: 1.3lb/0.6kg

Angle adjustment: 20° (5° forward, 15° backward)

Depth adjustment: 2"/5cm

Attachment points: 2

Back cane diameters: ¾"/1.9cm - 1"/2.5cm no spacers/shims needed

Release mechanism: One hand, quick release

Safety Specifications

This product has been successfully crash tested and meets the performance criteria for WC20 and ISO 16480-4.



Don't forget the kids!

We recommend the DECAF Java Back for the little ones. All of the contour adjustability of the Java Back, but with the patented FlexLoc® multi-axial hardware that makes fitting kids and their wheelchairs quick and easy. Fit any Decaf back to any wheelchair from 10"/25cm to 15"/38cm in width.



Ride Designs®

a branch of Aspen Seating, LLC