

McKESSEON



Safety Winged Blood Collection Sets **GLIDE**

For use only with McKesson Prevent® MFR #s 16-BC2134, 16-BC2334 and 16-BC2534, 16-7BC2134, 16-7BC2334, 16-BC2134H, 16-BC2334H, and 16-BC2334NL.

INSTRUCTIONS FOR USE

INTENDED USE

McKesson Prevent® Safety Winged Blood Collection Sets and evacuated blood collection tubes/syringes are used together for the collection of venous blood. The winged needle is designed with a safety shield, which can be activated to cover the needle immediately following blood collection to aid in the protection against accidental needlestick injury.

OPTIONAL PKG: If included, the Pre-Attached Tube Holder is designed to aid in protection against accidental non-patient needle injury and blood splatter. It also helps to improve the working efficiency as it eliminates the procedure of holder assembly to the blood collection set.

PRODUCT DESCRIPTION

McKesson Prevent® Safety Winged Blood Collection Sets are single-use, sterile winged needles bonded to flexible tubing with Luer adapters. They are sterile and non-pyrogenic.

Specifications

Item	Size		Priming Volume (ml)	Color
	Gauge x Needle Length x Tubing Length	Needle Diameter x Needle Length x Tubing Length		
Safety Winged Blood Collection Set	21G x 3/4" x 7"	0.8 x 19mm x 180mm	0.297	Green
	23G x 3/4" x 7"	0.6 x 19mm x 180mm	0.292	Blue
	21G x 3/4" x 12"	0.8 x 19mm x 305mm	0.503	Green
	23G x 3/4" x 12"	0.6 x 19mm x 305mm	0.497	Blue
	25G x 3/4" x 12"	0.5 x 19mm x 305mm	0.496	Orange

PRECAUTIONS

- Handle by appropriately trained healthcare professionals.
- Handle all biologic samples and blood collection "sharps" (lancets, needles, Luer adapters, and blood collection sets) in accordance with the policies and procedures of your facility.
- Obtain appropriate medical attention in the event of any exposure to biologic samples (e.g. through a puncture injury) since samples may transmit viral hepatitis, HIV (AIDS), or other infectious diseases.
- Refrain from carelessly releasing the lock or accidentally removing the rubber sleeve, or forcefully pulling the wings, as such actions might damage the integrity of the product.
- Do not forcefully release or re-activate the safety mechanism after it has been activated.
- Keep hands behind needle at all times during use and disposal the device.

CAUTIONS

- Single use only. A reuse of the product may cause harmful infections, injury, or death.
- Gloves should be worn when handling blood collection set and during venipuncture to minimize exposure hazard.
- Do not use if the package is opened or damaged, needle is defective, or the safety shield is not firmly assembled.
- Discard all blood collection "sharps" in biohazard containers approved for their disposal.
- Before use, twist the protective plastic sheath covering the patient needle and pull straight off to prevent an accidental needle stick or damage to the needle point.
- Before use, twist the protective plastic sheath covering the non-patient needle and pull straight off to prevent any damage to the rubber sheath or needle point.

STORAGE

Store the device in a dry, ventilated place. Avoid direct sunlight and away from the source of heat or ignition.

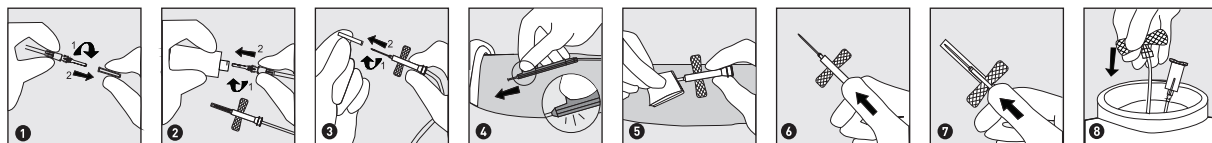
HANDLING

Activation of Safety Mechanism

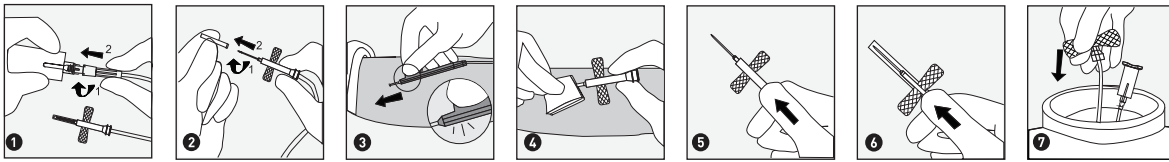
After completion of blood collection, remove needle from vein, slide the translucent yellow safety shield forward with the other hand, pulling the tubing backward until an audible click is heard indicating the needle is completely retracted and locked; the safety shield is in the correct place.

GLOVES SHOULD BE WORN WHEN HANDLING BLOOD COLLECTION SET AND DURING VENIPUNCTURE TO MINIMIZE EXPOSURE HAZARD.

FOR BLOOD COLLECTION (If SBCS without pre-attached holder)

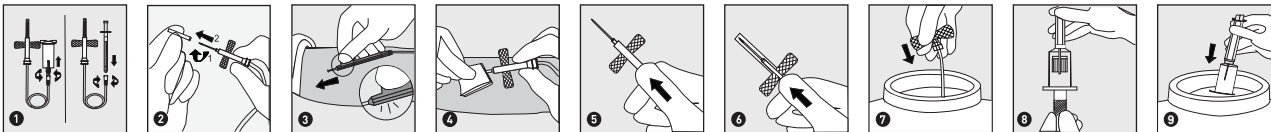


FOR BLOOD COLLECTION (If SBCS with pre-attached holder)



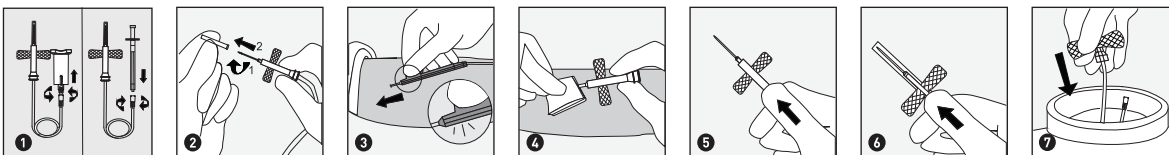
1. Twist the protective plastic sheath of the non-patient needle and pull straight off. (If SBCS with pre-attached holder, skip this step)
2. Screw the conical fitting of the Luer adapter in a clockwise direction into a blood-collection tube holder to ensure the Luer adapter is firmly fitted with the tube holder. Press the connector (female adapter), to ensure the connector is firmly fitted with the Luer adapter. (If SBCS with pre-attached holder, follow the procedures of this step to ensure the firmness of the connection)
3. Twist the protective sheath of the patient needle and pull straight off.
4. Perform venipuncture by holding wings.
5. After completion of blood collection, apply pressure to site using your fingers as shown.
 - Withdraw blood collection set by grasping the translucent yellow safety shield grip area with the thumb and index finger while at the same time grasping the tubing between the palm and other fingers.
6. **Safety shield activation—one-hand technique:** Grasp the translucent yellow safety shield grip area with the thumb and index finger, while at the same time grasping the tubing between the palm and other fingers. Advance the safety shield with thumb and index finger until a click is heard indicating that the safety shield is locked in place over the needle tip.
7. **Safety shield activation—modified one-hand technique withdrawal activation:** Withdraw blood collection set by grasping the translucent yellow safety shield grip area with the thumb and index finger. With opposite hand, grasp tubing between thumb and index finger while pushing yellow safety shield forward until a click is heard indicating that the needle is completely retracted and the safety shield is locked in place.
8. Dispose of all used materials in an appropriate container and wash hands.

FOR BLOOD COLLECTION USING A SYRINGE



1. Remove Luer adapter and attach syringe.
2. Twist the protective plastic sheath of the patient needle and pull straight off.
3. Perform venipuncture by holding wings.
4. After completion of blood collection, apply pressure to site using your fingers as shown.
 - Withdraw blood collection set by grasping the translucent yellow safety shield grip area with the thumb and index finger while at the same time grasping the tubing between the palm and other fingers.
5. **Safety shield activation—one-hand technique.** See step 5 under Blood Collection (above).
6. **Safety shield activation—modified one-hand technique withdrawal activation.** See step 6 under Blood Collection (above).
7. Draw blood into the syringe.
8. Transfer blood specimen from syringe using a blood transfer device.
9. Dispose of all used materials in an appropriate container and wash hands.

FOR SHORT TERM IV ADMINISTRATION (UP TO 2 HOURS)



1. Remove Luer adapter or Luer cap. Attach IV line or syringe to the Female Luer Adapter.
2. Twist the protective sheath of the patient needle and pull straight-off. Prime set in accordance with recommended procedure.
3. Perform venipuncture by holding wings. Administer medication. It is recommended that this device be changed per the institution's procedures, but do not use longer than 2 hours.
4. After completion of blood collection, apply pressure to site using your fingers as shown.
 - Withdraw blood collection set by grasping the translucent yellow safety shield grip area with the thumb and index finger while at the same time grasping the tubing between the palm and other fingers.
5. **Safety shield activation—One-hand technique.** See Step 5 under Blood Collection (above).
6. **Safety shield activation—Modified one-hand technique withdrawal activation.** See Step 6 under Blood Collection (above).
7. Dispose of all used materials in an appropriate container and wash hands.

Questions? Call 1-800-777-4908

Satisfaction Guaranteed
For complete details, please visit
mms.mckesson.com/mckesson-brands.